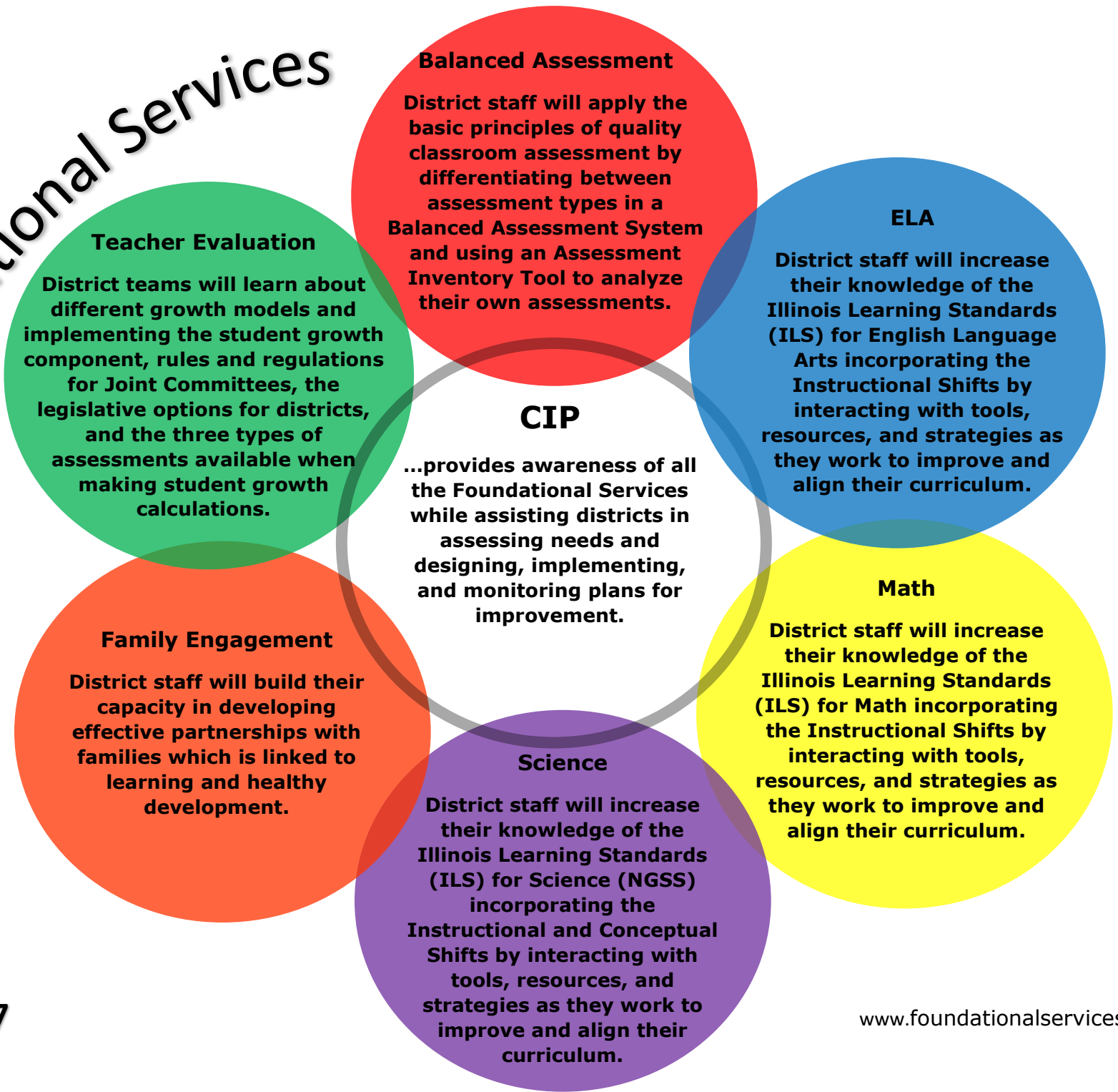


# Foundational Services



FY17

[www.foundationalservices.org](http://www.foundationalservices.org)

# ISBE Foundational Services FY17

ISBE Foundational Services will provide high quality professional development, through ROEs/ISCs, to all school districts in Illinois in key ISBE topics including the implementation of Illinois Learning Standards in ELA, Math and Science, promoting Family Engagement, supporting the Continuous Improvement Planning process, preparation for Balanced Assessments, and the incorporation of the growth model in Teacher Evaluation. Additional topics will be added by ISBE as needed.

The Three Pillars Include

